

主要型号展示 SHOWROOM FOR MAIN TYPES



司钻台
Driller's Panel

FKWDQ800-7

无线遥控台
Wireless Auxiliary
Remote Panel



FKWDQ960-10 & JY-2

司钻台
Driller's Panel



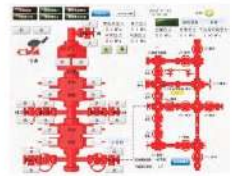
司钻台
Driller's Panel

FKWDQ1120-12

无线遥控台
Wireless Auxiliary
Remote Panel



FKWDQ1120-12 & JY-2



人机界面触摸屏
Hmi Touch Screen



FKWDQ1280-7



无线遥控台
Wireless Auxiliary
Remote Panel



司钻台
Driller's Panel

FKWDQ1800-11

无线遥控台
Wireless Auxiliary Remote Panel

主要型号展示 SHOWROOM FOR MAIN TYPES



FKDQ320-5透明模型



FKD&Q480-6



FKDQ720-6



FKDQ800-7



SZD1-1-7



FKDQ1280-8



FKDQ3200-9

主要型号展示 SHOWROOM FOR MAIN TYPES



FKDY640-6



FKQ480-5



FKQ640-6



Mini driller's Panel



FKQ800-8



分体式/Separate FKQ960-8



FKQ1280-7

主要型号展示 SHOWROOM FOR MAIN TYPES



FKQ1200-8



FKQ1280-8



FKQ1200-9



FKQ1800-14



YC96-14 地面流程控制系统 Surface Hydraulic Gate Valve Control System

地面防喷器控制装置技术参数表

MAIN SPECIFICATIONS FOR BOP CONTROL SYSTEM

序号 Item	型号 Type	控制对象数量 Number of Controlled Objects				蓄能器组 Accumulator Sets			油箱有效容积 Volume of Oil Reservoir (L)	泵系统流量 Flow Volume of Pump			电机功率 Motor Power (kw)	系统工作压力 Nominal Pressure (Mpa)	外形尺寸 Size (mm)
		环形 Annular (个)	闸板 Flams (个)	放喷 Choke line (个)	备用 Spare (个)	总容积 Total Volume (L)	标称可用液量 Nominal Useful Volume (L)	排列方式 Installation		电动油泵 Electric Pump (L/min)	气动油泵 Pneumatic Pump (ml/stroke)	手动油泵 Hand Pump (ml/冲)			
1	FK50-2		1			25×2	25	后置 rear	160	3.5		11	1.5	21	1500×1400×2300
2	FK75-2		1	1	1	25×3	37.5	后置 rear	170	12		11	5.5	21	1836×1190×2023
3	FK75-3		2		1	25×3	37.5	后置 rear	320	18	90		7.5	21	2900×1830×2340
4	FK80-5			4	1	40×2	40	侧置 side	220	24		11	11	21	2260×1460×1860
5	FK125-2		1	1	1	25×5	62.5	后置 rear	320	18		11	7.5	21	2719×1530×2340
6	FK125-3		1		1	25×5	62.5	后置 rear	320	18		11	7.5	21	2719×1530×2340
7	FK150-2	1	1		1	25×6	75	后置 rear	320	24	90		11	21	2500×1900×2340
8	FK160-3	1	1	1	1	40×4	80	后置 rear	400	24	90		11	21	2500×1730×2340
9	FK240-3		1	1		40×6	120	后置 rear	440	24	90		11	21	3000×1900×2340
10	FK240-5	1	3		1	40×6	120	后置 rear	630	24		11	11	21	3000×2000×2200
11	FKQ100-2			1	1	25×4	50	后置 rear	300	18	90		7.5	21	3060×1910×2340
12	FKQ120-3		1	1	1	63×2	63	后置 rear	320	18	60		7.5	21	3060×1910×2340
13	FKQ125-3	1	1		1	25×5	62.5	后置 rear	320	24		11	11	21	2719×1530×2340
14	FKQ150-3	1	1		1	25×6	75	后置 rear	450	18	90		7.5	21	3060×1910×2340
15	FKQ240-3	1	1		1	40×6	120	后置 rear	560	24	175		11	21	3920×2230×2610
16	FKQ240-4	1	2		1	40×6	120	后置 rear	630 560	24	90 175		11	21	3400×2150×2400 3920×2230×2610
17	FKQ320-3	1	2			40×8	160	后置 rear	630	24	175		11	21	3400×2150×2400
18	FKQ320-4	1	2		1	40×8	160	后置 rear	650	24	175		11	21	3400×2150×2400
19	FKQ320-4	1	2	1	1	40×8	160	侧置 side	650	24	175		11	21	4100×2150×2400
20	FKQ320-5	1	2	1	1	40×8	160	后置 rear	650	24	175		11	21	3400×2150×2540 4100×2150×2540
21	FKQ400-5	1	2	1	1	40×10	200	后置 rear	890	32	175		15	21	3145×2150×2540
22	FKQ400-6	1	3	1	1	40×10	200	后置 rear	890	32	175		15	21	4300×2150×2540
23	FKQ480-5	1	2	1	1	40×12	240	后置 rear	890	32	175		15	21	3900×2150×2540
24	FKQ480-6	1	2	1	2	40×12	240	侧置 side	890	32	175		15	21	4300×2150×2540
25	FKQ560-6	1	3	1	1	40×14	280	后置 rear	1050	42	175		18.5	21	3900×1950×2250
26	FKQ560-6	1	3		2	40×14	280	侧置 side	1050	42	175		18.5	21	5300×2150×2640
27	FKQ640-4	1	2		1	40×16	320	后置 rear	1320	42×1	175×2		18.5	21	4060×1950×2340
28	FKQ640-5	1	3	1	1	40×16	320	后置 rear	1300	42	175×2		18.5	21	3900×1950×2250
29	FKQ640-6	1	3	1	1	40×16	320	后置 rear	1300	42	175×2		18.5	21	3900×1950×2250
30	FKQ640-6	1	3	2	1	40×16	320	侧置 side	1300	42	175×2		18.5	21	5000×2360×2640
33	FKQ640-7	1	3		1	40×16	320	侧置 side	1500	42	175×2		18.5	21	5420×2360×2640
32	FKQ720-4	1	2	1	1	40×18	360	后置 rear	1350	42	175		18.5	21	4000×1950×2250
33	FKQ720-6	1	3	2	1	40×18	360	侧置 side	1500	42	175		18.5	21	5700×2360×2640
34	FKQ720-7		3		2	40×18	360	侧置 side	1500	42	175×2		18.5	21	5900×2360×2640
35	FKQ800-6	1	3	1	1	40×20	400	侧置 side	1500	42	175×2		18.5	21	5300×1780×2250 5400×2478×2640
36	KQ800-7	1	3	2	1	40×20	400	侧置 side	1500	42	175×2		18.5	21	5900×2360×2640 5900×2478×2640
37	FKQ800-8	1	3	2	2	40×20	400	侧置 side	1730	42	175×2		18.5	21	5900×2360×2640 5900×2478×2640

38	FKQ840-8	1	3	2	2	40×21	420	側置 side	1730	42	175×2		18.5	21	5900×2478×2640
39	FKQ960-6	1	3	1	1	57×17	480	側置 side	1730	52	175×3		22	21	5700×2478×2640
40	FKQ960-7	1	3	2	1	57×17	480	側置 side	1730	52	175×3		22	21	6000×2478×2640
41	FKQ960-8	1	3	2	2	57×17	480	側置 side	1850	52	175×3		22	21	6500×2478×2640
42	FKQ960-10	1	3	2	4	57×17	480	側置 side	1900	52	175×3		22	21	7500×2478×2640
43	FKQ1200-8	1	3	2	2	63×20	630	側置 side	2000	42×2	175×3		18.5×2	21	7900×2478×2640
44	FKQ1200-9	1	3	2	3	63×20	630	側置 side	2000	42×2	175×3		18.5×2	21	6000×2150×2500
45	FKQ1200-10	1	3	2	4	63×20	630	側置 side	2000	42×2	175×3		18.5×2	21	7500×2478×2640
46	FKQ1280-7	1	3	2	1	80×16	640	側置 side	2000	42×2	175×3		18.5×2	21	7400×2150×2400
47	FKQ1280-8	1	3	2	2	63×20	600	側置 side	2300	42×2	125×5		18.5	21	7560×2560×2510
48	FKQ1280-8	1	3	2	2	80×16	640	側置 side	2000	42×2	175×3		18.5×2	21	7700×2478×2640
49	FKQ1280-9	1	3	2	3	80×16	640	側置 side	2000	42×2	175×3		18.5×2	21	7700×2478×2640
50	FKQ1280-10	1	3	2	4	80×16	640	側置 side	2000	42×2	175×3		18.5×2	21	7700×2478×2640
51	FKQ1360-8	1	3	2	2	75×18	680	側置 side	2430	42×2	175×3		18.5×2	21	7400×2478×2700
52	FKQ1440-10	1	4	4	1	80×18	720	側置 side	2300	42×2	175×3		18.5×2	21	8860×2558×2700
53	FKQ1600-7	1	3	2	1	80×20	800	側置 side	2500	42×2	175×3		18.5×2	21	7200×2478×2640
54	FKQ1600-8	1	3	2	2	80×20	800	側置 side	2500	42×2	175×3		18.5×2	21	7200×2478×2640
55	FKQ1600-9	1	3	2	3	80×20	800	側置 side	2500	42×2	175×3		18.5×2	21	7200×2478×2640
56	FKQ1800-14	1	5	6	2	63×30	645	后置 rear	2660	42×2	175×3		18.5×2	21	8500×2478×2640
57	FKDQ320-5	1	2	1	1	40×8	160	側置 side	650	24	175		11	21	3960×2230×2340
58	FKDQ480-5	1	2	1	1	40×12	240	后置 rear	890	32	175×2		15	21	4460×2440×2610
59	FKD&Q480-6	1	3	2		40×12	240	后置 rear	890	32	175×2		15	21	5300×2230×2200
60	FKDQ560-6	1	3	3	3	40×14	280	后置 side	1220	42	175×2		18.5	21	5000×2500×2230
61	FKDQ630-7	1	3	2	1	63×10	315	后置 rear	1250	32			15	21	3400×1650×1900
62	FKDQ640-6	1	3	1	1	40×16	320	側置 side	1300	42	175×2		18.5	21	3900×2150×2250
63	FKDQ640-7	1	3	2	1	40×16	320	后置 rear	1300	42	175×2		18.5	21	4500×2150×2250
64	FKDQ720-6	1	3	1	1	40×18	360	側置 side	1500	42	175×2		18.5	21	5460×2230×2360
65	FKDQ760-7	1	3	2	1	40×19	380	后置 rear	1650	42	175×2		18.5	21	4700×1854×2200
66	FKDQ800-7	1	3	2	1	40×20	400	側置 side	1500	32×2	175×2		15×2	21	5700×2150×2310
67	FKDQ800-8	1	3	2	2	40×20	400	側置 side	1500	42	175×2		18.5	21	6200×2478×2610
68	FKDQ840-8	1	3	2	2	40×21	420	側置 side	1500	42	175×2		18.5	21	6200×2478×2610
69	FKDQ960-8	1	3	2	2	57×17	480	側置 side	1850	52	175×3		22	21	6500×2478×2640
70	FKDQ1200-15	2	5	5	3	63×20	630	后置 rear	2500	42×2	175×4		22×2	21	8500×2150×2200
71	FKDQ1280-7	1	3	2	1	75×17	640	側置 side	2000	42×2	175×3		18.5×2	21	6000×2360×2500
72	FKDQ1280-8	1	4	2	1	40×32	640	后置 rear	2600	42×2	175×3		18.5×2	21	5400×2230×2340
73	FKDQ1800-11	1	4	4	2	63×30	900	后置 rear	2880	42×2	175×3		18.5×2	21	7160×2150×2200
74	FKDQ1800-11	1	4	4	2	63×30	645	后置 rear	2880	42×2	175×3		18.5×2	21	7160×2150×2200
75	FKDQ3200-9 (带分流器)	2	5	2	1	100×32	1600	后置 分体	4500	52×3	175×7		22×3	21	6660×2578×2900 + 2(1410×2550×2900)
76	FFKWDQ800-7	1	3	2	1	40×20	400	側置 side	1500	42	175×2		18.5	21	5860×2558×2610
77	FKWDQ960-10&JY2	1	4	2	3	80×12	480	側置 side	2000	52	175×3		22	21	9660×2440×2705
78	KWDQ1120-12	1	4	7		40×28	560	側置 side	3570	42×2	175×3		18.5×2	21	9500×2478×2700
79	FKWDQ1280-7	1	3	2	1	80×16	640	側置 side	2600	42×2	175×3		18.5×2	21	7560×2558×2610
80	FKDY640-6	1	3	1	1	40×16	320	側置 side	1300	42	175×2		18.5	21	5000×2360×2560

地面防喷器控制装置功能配置表

FUNCTION OF ALL COMPONENTS

序号 Item	型号 Type	环形压力控制 Annular	电动泵 Electric Pump	气动油泵 Pneumatic Pump	手动油泵 Hand Pump	双电动泵 Dual Pump	三电动泵 Dual Pump	报警装置 Alarm System	氮气备用系统 Backup Nitrogen System	保护房 Protection House	加热装置 Heating Equipment	空调 Air Conditioner	液压油加热 Oil Heater	司钻控制台 Driller's Panel	辅助司钻台 Auxiliary Panel	管排架及管线 Pipe Rack	防提安全装置 Anti-lifting Device
1	FK50-2		●		●					●	○						
2	FK75-2		●		●					●	○		○				
3	FK75-3		●	●								○		●		○	○
4																	
5	FK125-2		●		●					●	○		○				
6	FK125-3		●		●					●	○		○				
7	FK150-2		●		●					●	○		○				
8	FK160-3	●	●	●						●	○						
9	FK240-3	●	●	●						●	○		○				
10	FK240-5		●		●			○		●	○	○	○			○	○
11	FKQ100-2	●	●	●				○		●	○	○	○	●		○	○
12	FKQ120-3		●	●				○		●	○	○	○	●		○	○
13	FKQ125-3		●		●					●	○		○	●			○
14	FKQ150-3	●	●	●				○		●	○	○	○	●		○	○
15	FKQ240-3	●	●	●				○		●	○	○	○	●		○	○
16	FKQ240-4	●	●	●				○		●	○	○	○	●		○	○
17	FKQ320-3	●	●	●				○		●	○		○	○			
18	FKQ320-4	●	●	●				○		●	○		○	●		○	○
19	FKQ320-4	●	●	●				○		●	○		○	●		○	○
20	FKQ320-5	●	●	●				○		●	○		○	●	○	○	○
21	FKQ400-5	●	●	●				○		●	○		○	●	○	○	○
22	FKQ400-6	●	●	●				○		●	○		○	●	○	○	○
23	FKQ480-5	●	●	●				○		●	○		○	●	○	○	○
24	FKQ480-6	●	●	●				○		●	○		○	●	○	○	○
25	FKQ560-6	●	●	●				○	○	●	○		○	●	○	○	○
26	FKQ560-6	●	●	●				○	○	●	○		○	●	○	○	○
27	FKQ640-4	●	●	●				○	○		○	○	○	●		○	○
28	FKQ640-5	●	●	●				○	○	●	○		○	●	○	○	○
29	FKQ640-6	●	●	●				○	○	●	○		○	●	○	○	○
30	FKQ640-6	●	●	●				○	○	●	○		○	●	○	○	○
31	FKQ640-7	●	●	●				○	○	●	○	○	○	●	○	○	○
32	FKQ720-4	●	●	●				○	○	●	○	○	○	●	○	○	○
33	FKQ720-6	●	●	●				○	○	●	○	○	○	●	○	○	○
34	FKQ720-7	●	●	●				○	○	●	○	○	○	●	○	○	○
35	FKQ800-6	●	●	●				○	○	●	○	○	○	●	○	○	○
36	FKQ800-7	●	●	●				○	○	●	○	○	○	●	○	○	○
37	FKQ800-8	●	●	●				○	○	●	○	○	○	●	○	○	○
38	FKQ840-8	●	●	●				○	○	●	○	○	○	●	○	○	○
39	FKQ960-6	●	●	●				○	○	●	○	○	○	●	○	○	○
40	FKQ960-7	●	●	●				○	○	●	○	○	○	●	○	○	○
41	FKQ960-8	●	●	●				○	○	●	○	○	○	●	○	○	○

42	FKQ960-10	●	●	●	●	○	○	●	○	○	○	●	○	○	○
43	FKQ1200-8	●	●	●	●	●	○	●				●	●	○	○
44	FKQ1200-8	●	●	●			○	○	●	○	○	○	●	○	○
45	FKQ1200-9	●	●	●	●		○	○	●	○	○	○	●	○	○
46	FKQ1200-10	●	●	●	●		○	○	●	○	○	○	●	○	○
47	FKQ1280-7	●	●	●	●		○	○	●	○	○	○	●	○	○
48	FKQ1280-8	●	●	●	●		○	○	●	○	○	○	●	○	○
49	FKQ1280-9	●	●	●	●		○	○	●	○	○	○	●	○	○
50	FKQ1280-10	●	●	●	●		○	○	●	○	○	○	●	○	○
51	FKQ1360-8	●	●	●			●	○	●	○	○	○	●	●	○
52	FKQ1440-10	●	●	●	●		●	○	●	○	○	○	●	●	○
53	FKQ1600-7	●	●	●	●		○	○	●	○	○	○	●	○	○
54	FKQ1600-8	●	●	●	●		○	○	●	○	○	○	●	○	○
55	FKQ1600-9	●	●	●	●		○	○	●	○	○	○	●	○	○
56	FKQ1800-14	●	●	●	●		○	○	●	○	○	○	●	○	○
57	FKDQ320-5	●	●	●			●	○	●	○	○	○	●	●	○
58	FKDQ480-5	●	●	●			●	○	●	●	○	●	●	○	○
59	FKD&Q480-6	●	●	●			●	○					●	●	○
60	FKDQ560-6	●	●	●			●	○					●	●	○
61	FKDQ630-7	●	●		●		●	●					●	○	○
62	FKDQ640-6	●	●	●			●	○					●	○	○
63	FKDQ640-7	●	●	●			●	●					●	○	○
64	FKDQ720-6	●	●	●			●	○	●	○	○	○	●	●	○
65	FKDQ760-7	●	●	●			●	○					●	●	○
66	FKDQ800-7	●	●	●			●	○	●	○	○	○	●	○	○
67	FKDQ800-8	●	●	●			●	○	●	○	○	○	●	○	○
68	FKDQ840-8	●	●	●			●	○	●	○	○	○	●	○	○
69	FKDQ960-8	●	●	●			●	○	●	○	○	○	●	●	○
70	FKDQ1200-15	●	●	●	●		●	○					●	○	○
71	FKDQ1280-7	●	●	●	●		●	○					●	●	○
72	FKDQ1280-8	●	●	●	●		●	○	●	○	○	○	●	●	○
73	FKDQ1800-11	●	●	●	●		●	○	●	●	●	●	●	●	○
74	FKDQ1800-11	●	●	●	●		●	○					●	○	○
75	FKDQ3200-9 (带分流器)	●	●	●		●	●	○					●	●	○
76	FKWDQ800-7	●	●	●			●	○	●	●	○	●	●	●	○
77	FKWDQ960-10&JY-2	●	●	●			●	○	●				●	●	○
78	FKWDQ1120-12	●	●	●	●		●	○	●	●	○	●	●	●	○
79	FKWDQ1280-7	●	●	●	●		●	○	●	○	○	○	●	●	○
80	FKDY640-6	●	●	●			●	○	●	○	○	○	●	○	○

注: 1、“●”为标准配置,“○”为可选配置。

2、表中未列的功能或特殊结构可按顾客要求设计制造。

3、防提安全装置是我公司特别为深层钻井配置,控制对象少于6个的控制装置使用I型;控制对象在6个或以上的控制装置使用II型。需要说明的是,以上介绍的系统功能,有的仅用于个别型号产品,标准产品出厂时并不具备全部功能。重要的是根据钻井的具体需要选择能满足要求的产品。因此,顾客在选用我公司地面防喷器控制装置时,最好与我公司销售人员联系,配合您选择合适的产品。

Be noted that:

1. Mark "●" in the table refers to standard components and mark "○" in the table refers to optional components.

2. Blank in the table means that it can be designed and manufactured in accordance with the customer's special requirement.

3. Anti-lifting safety Device is specially designed for deep drilling, FTI for one pipe ram preventer control system and FTII for two pipe ram preventers control system.

地面防喷器控制装置选型要点 KEY POINTS OF BOP CONTROL SYSTEM SELECTION

为了达到安全可靠地控制防喷器，防止井喷失控的目的，在选购地面防喷器控制装置时应按照石油天然气行业标准SY/T5053.2-2007和API Spec.16D规范的要求选取合格的产品，所考虑的因素不能少于以下内容：

- a) 防喷器组关闭用液量与控制装置可用液量的关系；
- b) 环形防喷器关闭及打开液动节流阀用液量与控制装置泵组的关系；
- c) 环境适应性；
- d) 海上钻井平台的特殊要求。

一、控制对象数量及蓄能组可用液量的选择

蓄能器组可用液量必须大于防喷器组关闭用液量的2倍。

二、环形防喷器关闭用液量对控制装置的要求

在不使用蓄能器组且一套泵系统不工作时，余下的泵系统2min的排量必须能够关闭环形防喷器。

三、环境适应性

常规制作的地面防喷器控制装置只能适应环境气温 $-13^{\circ}\text{C}\sim 50^{\circ}\text{C}$ ，当环境温度超越适应范围时应选用具有保温和温度控制的铁房如：

- a) 保温制热功能的铁房可适应 -40°C 以上气温；
- b) 保温制冷功能的铁房可适应 60°C 以下气温；
- c) 气遥控管缆适应 $-40^{\circ}\text{C}\sim 50^{\circ}\text{C}$ 气温，但在 0°C 以下气温时必须使用干燥的压缩空气，以防止水份结冰堵塞通道以致失效。

四、海洋钻井平台控制装置特殊要求

按石油天然气行业标准规定，海洋钻井平台（未含修井）司钻控制台应配有声、光报警装置以显示：

- a) 蓄能器压力过低；
- b) 油箱液面过低；
- c) 气源压力过低；
- d) 海上的防潮防腐蚀要求和备用电源指示（电控系列）。

To control BOP reliably and safely as well as prevent uncontrollable blowout, oil & natural gas industry standards SY/T5053.2-2007 and API Spec. 16D should be followed when you choose and purchase a suitable product. Factors to be considered should at least be:

- a) Relationship between liquid volume required for closing BOP stacks and liquid volume available from the control system;
- b) Relationship between liquid volume used to close one annular BOP, open the hydraulically operated choke valve(s), and capacity of pump system;
- c) Environmental adaptation;
- d) special requirements on off-shore drilling platform.

1. Options for Controlled objects and Useful Liquid Volume

Useful liquid volume from an accumulator group shall be 2 times greater than the required volume of closing BOP stacks.

2. Requirements for Control System Liquid Volume Used to Close an Annular BOP and Open Choke Valve(s)

With the accumulators isolated from service and with one pump systems or one power system out of service, the remaining pump system(s) shall have the capacity to close one annular BOP and open choke valve(s) within two minutes.

3. Environmental Adaptation

Conventional BOP control system is only suit for ambient temperature of $-13^{\circ}\text{C}\sim 50^{\circ}\text{C}$. When ambient temperature goes beyond, a house made of steel sheet and equipped with thermal insulation and temperature control should be used:

- a) A steel sheet house with thermal insulation and heating is suitable for ambient temperature above -40°C ;
- b) A steel sheet house with thermal insulation and cooling is suitable for ambient temperature below 60°C ;
- c) Hose bundle for remote control is suit for $-40^{\circ}\text{C}\sim 50^{\circ}\text{C}$. However, when ambient temperature goes below 0°C , dry compressed air must be used otherwise the hose would fail to work because of blocked due to moisture freezing.

4. Special Requirement on Control System for Off-Shore Drilling Platform

According to oil & natural gas industry standard, driller's panel for off-shore platform (without workover) shall be equipped with audible and visual alarms to indicate the conditions of:

- a) Low accumulator pressure;
- b) Low liquid level in oil reservoir;
- c) Low pressure of compressed air source;
- d) In addition, moisture proof, corrosion resistance should be considered seriously. And back-up power source in use (electric control series).

地面防喷器控制装置型号说明 TYPE ILLUSTRATION



氮气备用系统 SPARE NITROGEN SYSTEM

可根据需要提供氮气备用系统，其作用如下：

1. 为蓄能器补充氮气；
2. 当蓄能器或泵不能为控制管汇提供足够的动力源时，可以使用氮气备用系统提供高压气体用以关闭闸板防喷器；
3. 在紧急情况下为司钻台及辅助司钻台提供应急气源；
4. 在紧急情况下为气动泵提供驱动气源；

Spare nitrogen system can be supplied in request of customers' requirements:

1. The spare nitrogen system can provide air source for the accumulators;
2. If the accumulator or the pump can not provide the control manifold with enough power fluid, the spare nitrogen system can be used to provide high pressure air to close the ram blow out preventer;
3. The spare nitrogen system can provide emergency air source for the driller's panel and the auxiliary remote panel;
4. The spare nitrogen system can provide emergency air source for the pneumatic pump.

技术参数表 Main specifications

型号 Type	公称容积 Nominal volume (L/Gal)	工作压力 Working pressure (MPa/PSI)	重量 Weight (Kg)	体积 Size (mm)
BN240	240/63	15/2100	680	1290 × 986 × 1880
BN320	320/88	15/2100	900	1690 × 1080 × 1880
BN400 (无保护房/No Protecting House)	400/110	15/2100	1120	1650 × 550 × 1700



原理说明

我公司生产的FT I型和FT II型“防提安全装置”适用于井口封井的安全刹车操作。

液压防喷器是石油勘探开发钻井中广泛使用的一种非常重要的防止井喷的安全设备，但是由于设备本身设计上的局限，以及使用操作中人为的因素，导致在防喷器关闭后可能会发生错误操作而损坏防喷器井口套管或钻具；事实上发生类似事故的油田不少，造成不同程度的财产损失。

我公司提供的这套装置，具有安装简单、操作方便、性能可靠的特点。安装使用后，能避免因关闭防喷器后提升钻杆拉坏防喷器闸板、套管或拉断钻杆等事故的发生，达到封井后安全使用井口设备的目的。

PRINCIPLE DESCRIPTION

The ANTI-LIFTING SAFETY DEVICE FT I and FT II manufactured by GZDongSu are suitable for brake of killing well at the mouth of a well.

Hydraulic BOP stacks are important and used widely for preventing blowout during petroleum exploratory development. But the limitation of design and human's factors cause possibly wrong operation and damage to the casing and drilling equipment after BOP is closed. Factually, the accidents arise at times in the oil field and result in a good deal of losses.

The ANTI-LIFTING SAFETY DEVICE supplied by us has an advantage of convenient installation, easy operation and reliable performance. It can protect against damaging rams, casing and drill pipe because of lifting the drill pipe after the pipe rams has been closed.



FT II 型



DJY105-2节流管汇控制箱

原理说明

节流管汇控制台用于节流管汇的液控节流阀的开关控制。由于其配备了宽温防爆数显仪表，显示精度高，环境适应性型强，是油气井实施井控作业的最佳配套设备。

整机配备

节流控制台由控制箱、传感器、电缆、液压管等部件组成。

控制箱由电动泵或气动泵、手动泵、蓄能器、单流阀、节流阀、安全阀、截止阀、三位五通阀、油箱等液压元件及电气控制元件、显示控制仪表等元件组成。

PRINCIPLE DESCRIPTION

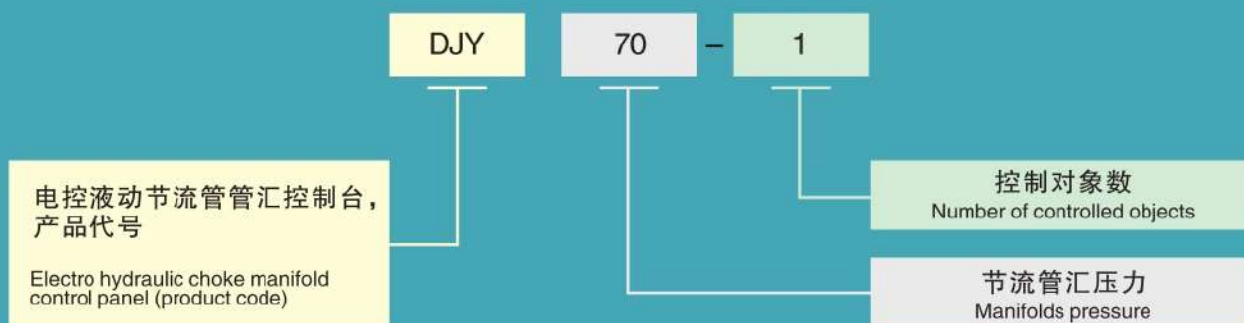
Choke Control Panel is used to open or close hydraulic choke valve(s). Because it is equipped with wide temperature range digital meters, which has higher accuracy and better environmental adaptation, it is the best unit to carry out well control.

MAIN COMPONENTS OF THE PANEL

Choke Manifold Control Panel is mainly composed of control cabinet sensor, cable, hydraulic pressure hoses and other parts. And the control cabinet is composed of electric pump or pneumatic pump, manual pump, accumulator, check valve, relief valve safety valve, stop valve, 3-position 5-way valve, oil reservoir, digital meters and other special electric devices.

型号系列及型号说明

TYPE ILLUSTRATION



节流管汇控制台常规参数表

SPECIFICATIONS OF HYDRAULIC CHOKE MANIFOLD CONTROL PANEL

名称 Item	型号 Type	工作压力 Working Pressure (Mpa)	电源电压 Voltage (V)	气源压力 Air Source Pressure (MPa)	电动泵排量 Displacement Electric Pump (L/min)	气动泵排量 Displacement of pneumatic pump (ml/stroke)	单根控制管线长度 Length of Per hydraulic Hose (m)	控制管线数量 Number of hydraulic Hose	重量 Weight (kg)	体积 Size (mm)
气控液动电显示节流管汇控制台 Pneumatic Hydraulic Choke Control Panel	QDJY35-1	4.2	220	0.5~0.8		80	15	2	260	800 × 700 × 1370
气控液动电显示节流管汇控制台 Pneumatic Hydraulic Choke Control Panel	QDJY70-1	4.2	220	0.5~0.8		80	15	2	360	900 × 700 × 1400
电控液动节流管汇控制台 Electric Hydraulic Choke Control Panel	DJY70-2	4.2	380		4		15	4	360	900 × 700 × 1400
电控液动节流管汇控制台 Electric Hydraulic Choke Control Panel	DJY105-2	4.2	380		4		15	4	360	900 × 700 × 1400